



OnSolve Incident Management

Take command and control of incidents from anywhere in seconds

Overcome today's critical events by mobilizing employees and other personnel quickly through an easy-to-use interface.

Global incidents are occurring at an unprecedented pace, creating vulnerabilities and risks for organizations of all sizes. The safety and security of your employees, assets, reputation and supply chains can be threatened unexpectedly.

Use Cases

Emergency Response

Ensure procedures are followed by securely sharing policies and procedures.

Incident Response

Ease high-stress environments for users with an easy-to-navigate workflow.

Physical Security & Security Operations

Eliminate delays caused by trying to locate files or making calls. All information is consolidated and ready for distribution.

Business Continuity

Enable employees to connect via a secure conference bridge and linked messaging capabilities to foster organizational alignment.

Compliance and Control

Ensure accurate tracking, accountability and safety and gain insights for future improvement with post-action reporting.

Training and Exercises

Drive a faster return to normal operations through tactical business communications plans accessible on our interactive interface.

OnSolve® Incident Management Capabilities

When a critical event occurs, you can ensure rapid recovery from any disruption through our interactive interface. Activate response teams and leverage communications analytics to make sure the right escalation process is followed.

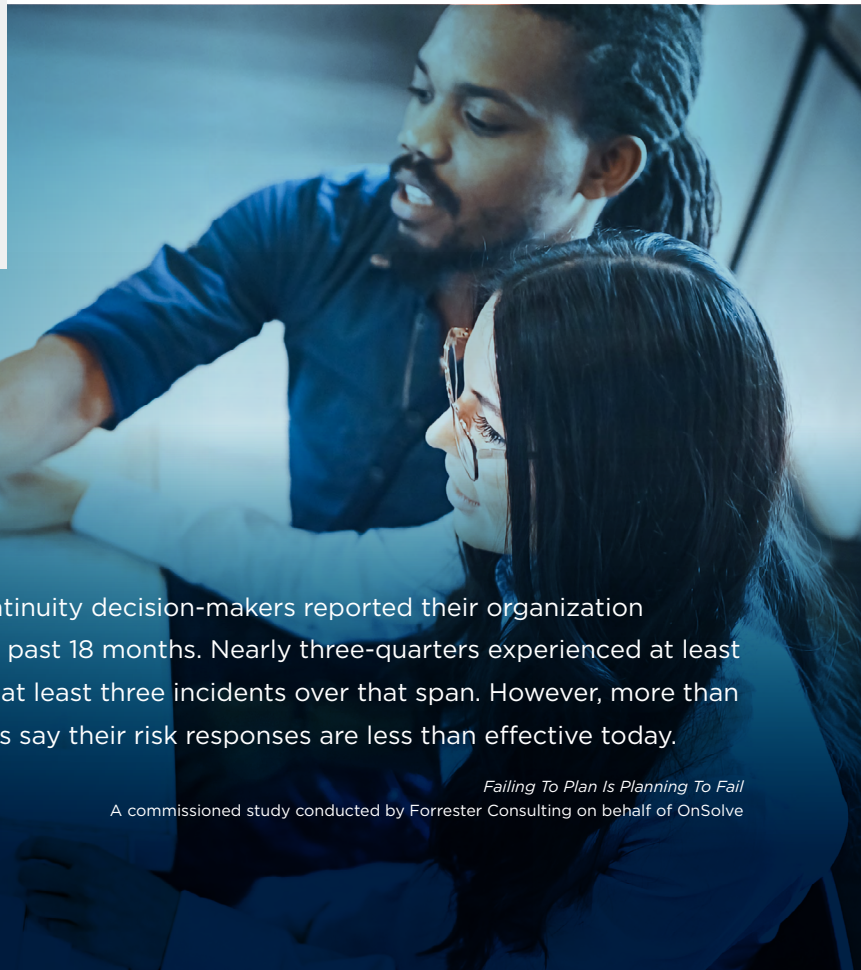
Whether you need all hands on deck in response to a full crisis, seamless coordination of a targeted team or consistent compliance and performance for standard procedures and everyday events, OnSolve Incident Management is the fastest, easiest and best product available.

Our Platform streamlines and automates alerts and critical information flows and makes it easy to quickly activate response teams, providing your organization with real-time command and control. Your reaction is instant, and operations can return to normal as quickly as possible.

Did you know?

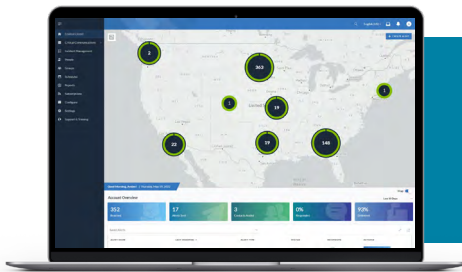
Almost all (99%) of risk, security and business continuity decision-makers reported their organization experienced at least one disruptive incident in the past 18 months. Nearly three-quarters experienced at least two types of incidents, and more than a third had at least three incidents over that span. However, more than half of risk management and security professionals say their risk responses are less than effective today.

Falling To Plan Is Planning To Fail
A commissioned study conducted by Forrester Consulting on behalf of OnSolve



With OnSolve Incident Management you can:

- Mobilize employees quickly through an easy-to-use interface.
- Promote consistent methodology by securely sharing policies and procedures.
- Provide an easy-to-navigate workflow to reduce stress during incident response.
- Facilitate organizational alignment by enabling employees to connect through a secure conference bridge and linked messaging capabilities.
- Deliver visibility into alert analytics in real time to key stakeholders.
- Improve response effectiveness through training and crisis response exercises.
- Ensure compliance while identifying gaps in your communications plans and areas in need of improvement.
- Utilize post-action reporting to improve tracking, accountability, safety and future response plans.



Experience the Power of the OnSolve Platform

See why resilient organizations choose OnSolve.

REQUEST A DEMO TODAY →

About OnSolve

OnSolve is a leading critical event management provider that proactively mitigates physical threats, allowing organizations to remain agile when a crisis strikes. Using the most trusted expertise and reliable AI-powered risk intelligence, critical communications and incident management technology, the OnSolve Platform enables enterprises, SMB organizations and all levels of government to detect, anticipate and mitigate physical threats that impact their people, places and property.

With billions of alerts sent annually and proven support for both the public and private sectors, OnSolve is used by thousands of entities to save lives, protect communities, safeguard critical infrastructure and enable agility for the organizations that power our economy.

For more information, please visit www.onsolve.com.

