



Organizational Resilience

The Path to Better Business Outcomes

Incidents can occur in the blink of an eye. Organizations need state-of-the-art technology and expertise on their side to effectively anticipate, prepare, respond and adapt — that's true organizational resilience. Survival isn't enough — today, organizations must also thrive after a crisis.

What Is Critical Event Management?

Critical event management (CEM) includes the resources, tactics and organizational alignment that facilitates effective risk mitigation and incident response before, during and after a crisis. Done well, effective critical event management promotes stronger organizational resilience.

Why Is Critical Event Management Important to Organizational Resilience?

Organizations face an increasingly dispersed, complex and mobile world, a steady rise in the frequency and intensity of critical events, and the explosion of available data and data sources.



Without an integrated solution in place, a critical event can pose serious risk to your organization's future, including people, places, property, revenue, operations, brand reputation and overall continuity. The key to remaining agile and adaptable in the face of disruption is critical event management, which makes it possible to:

- **Devise strategies** to prevail during uncertain conditions, and decide on future courses of action.
- **Recognize early warning signs** and proactively communicate with employees/stakeholders regarding potential impacts and necessary precautions.
- **Deliver timely and relevant** critical event notifications to coordinate across departments for a synchronized response to emergency situations.
- **Facilitate activities and processes** that help managers and employees understand how to act during uncertain times.
- **Respond effectively** to changes in the organizational culture.

Resilient organizations are distinguished by their ability to remain agile in the face of a crisis, while simultaneously resuming peak performance with minimal disruption. CEM aligns resources across your organization to proactively identify and analyze physical threats to people, places and property, rapidly communicate with stakeholders and activate response teams according to business strategy.

How Does OnSolve Strengthen Organizational Resilience?

Strengthening organizational resilience necessitates a modern CEM platform that is faster and more accurate than traditional manual processes. The OnSolve® Platform for Critical Event Management optimizes and centralizes core CEM capabilities and unifies third-party data to streamline the management of incidents. Leveraging powerful AI and a data science team, the Platform drives seamless communication and coordination, empowering users to monitor activities and orchestrate workflows during common and complex threats in real time.

By having the right information sooner, with more time to react and more confidence in execution, organizations can make every minute count and better protect people, places and property.

The Next Evolution of the OnSolve Platform Is Here

Our intuitive Platform connects data, visualization, interaction, and engagement across all our products and capabilities to provide users with a streamlined and integrated experience. Monitor and manage dynamically shifting critical events seamlessly.

With the OnSolve Platform you'll:



Respond faster and improve outcomes with AI-powered and analyst-vetted risk intelligence.



Deliver fast, effective alerts when they matter most like thousands of organizations who already rely on OnSolve.



Leverage our Platform designed for organizations of all sizes.

The OnSolve Platform for Critical Event Management consists of three elements:



Risk Intelligence

Human-validated AI works 24/7 to aggregate complex data on any given situation, tracking feeds from thousands of sources and sorting through the noise to pinpoint and promote the most relevant information for organizations, residents and employees to act on — in real time.



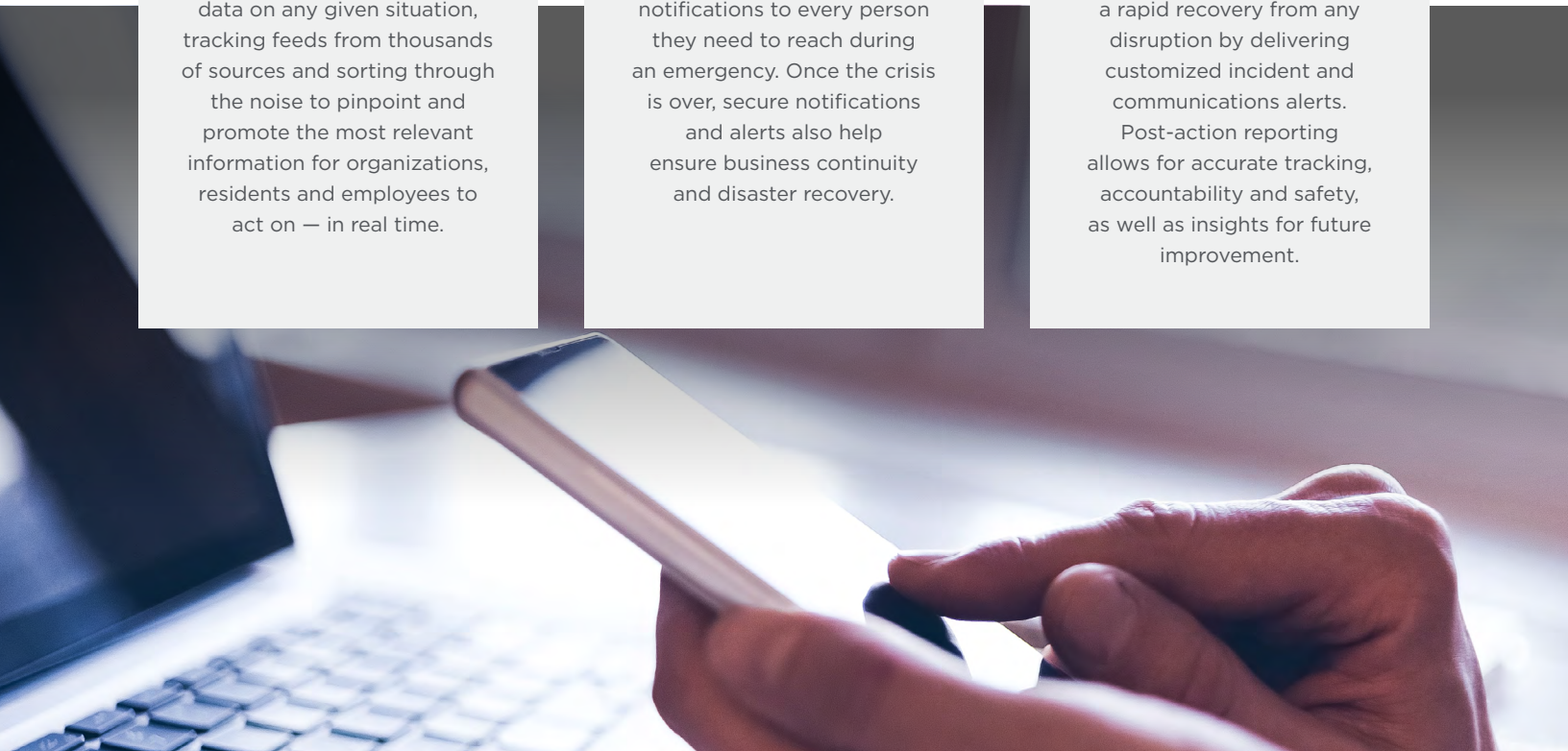
Critical Communications

Response teams can send targeted, time-sensitive notifications to every person they need to reach during an emergency. Once the crisis is over, secure notifications and alerts also help ensure business continuity and disaster recovery.



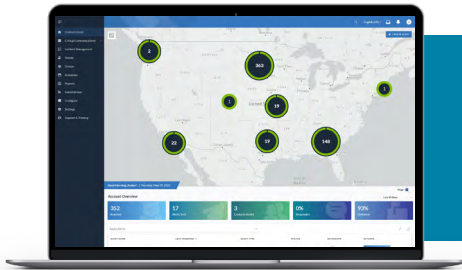
Incident Management

Using an easy-to-use interface, response teams can ensure a rapid recovery from any disruption by delivering customized incident and communications alerts. Post-action reporting allows for accurate tracking, accountability and safety, as well as insights for future improvement.



How Will You Protect What Matters Most?

More time to react and more confidence in your execution — OnSolve empowers your organization to keep your stakeholders safe, informed, assured and productive when a crisis strikes. Through a modern, integrated platform, your organization can leverage faster response times, shorter recovery times and consistent actions to preserve stability and strengthen resilience.



Experience the Power of the OnSolve Platform

See why resilient organizations choose OnSolve.

REQUEST A DEMO TODAY →

OnSolve is a leading critical event management provider that proactively mitigates physical threats, allowing organizations to remain agile when a crisis strikes. Using the most trusted expertise and reliable AI-powered risk intelligence, critical communications and incident management technology, the OnSolve Platform enables enterprises, SMB organizations and all levels of government to detect, anticipate and mitigate physical threats that impact their people, places and property.

With billions of alerts sent annually and proven support for both the public and private sectors, OnSolve is used by thousands of entities to save lives, protect communities, safeguard critical infrastructure and enable agility for the organizations that power our economy.

For more information, please visit www.onsolve.com.

