

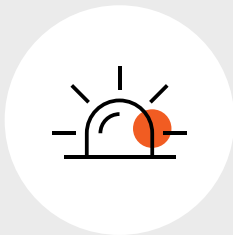


“ I am very pleased with this vital service. Time and time again we see the positive impact the calls make communicating important messages that keep our communities safe.”

Sheriff Joseph D. McDonald, Jr.
Plymouth County Sheriff's Department

OnSolve® CodeRED® is a cloud-based software solution that has been trusted by thousands of government agencies since 1998. Using CodeRED, agencies of every size and scope can easily deliver geo-targeted, time-sensitive information to any individual opting into the service, using voice, email, SMS, IPAWS and more.

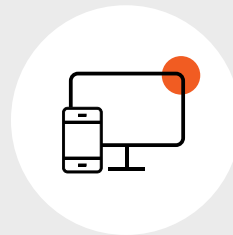
How Does It Work?



An emergency occurs.



Agency creates a CodeRED alert and sends it to a targeted area.



People are alerted by phone, email, text, mobile app, etc.



CodeRED alert is received, and people can ACT.

MUST-HAVES OF AN EMERGENCY NOTIFICATION SYSTEM:

- ✓ High-speed and reliable performance at an affordable price
- ✓ Dedicated help from a vendor who works alongside you to build your data and engage with your community
- ✓ Easy integration with other programs
- ✓ A fully compliant IPAWS solution from a vendor who has a strong relationship with FEMA
- ✓ The ability to instantly send critical and non-critical alerts through multiple channels simultaneously to reach your intended audience
- ✓ 24/7/365 availability and specialty trained customer support to work directly with you every step of the way

Handle Critical Events with the CodeRED Emergency Notification System

Are you prepared to alert citizens during an emergency?

We are confident CodeRED is the ideal fit for your agency. We understand the critical nature of your communication strategy requires not only a fully functional system, but also an experienced, reliable vendor capable of developing and maintaining a true partnership with your organization.

What makes CodeRED different?

- 1 CodeRED has the longest history of successful implementations and innovation in the industry. **We've been fighting and winning this battle longer than any other notification solution on the market.**
- 2 Our fully redundant platform can deliver millions of messages at a time. **We have data centers spanning the entire globe, and our rollover capabilities ensure your messages are sent.**
- 3 Your assigned team of highly trained professionals comes with decades of combined experience in the mass notification industry. **Customer support is available 24/7/365 at no additional charge. Emergencies don't take holidays, and neither do we!**
- 4 Advanced ESRI-based mapping allows for more precisely targeted messaging with full-time GIS experts on staff. **No need to purchase GIS software or use internal resources to host, maintain or update maps — we've got you covered.**
- 5 The ability to customize your CodeRED package with a wide variety of features, including text-to-enroll, two-way messaging, translation services, detailed reporting and more. **If you're unsure which features you need, don't stress — our trained staff will properly configure the system specifically for your agency.**



About OnSolve

OnSolve® offers award-winning critical communications products that enable enterprise, government and business-wide agility during daily operations and times of disruption through integrated technology and expertise. Organizations of all sizes and types can quickly distribute both routine information and emergency alerts to large numbers of people on virtually any device. As pioneers of the mass notification industry, OnSolve sends over 2 billion notifications annually with more than 60 years of proven support to both the public and private sectors.

We provide open cloud-based communication solutions that enable you to not only initiate alerts from any location, but also synchronize contact data and combine alerting functionality with other existing business systems, removing manual processes and improving efficiency. This allows you to get the right information to the right people at the right time — so you can mitigate risk, strengthen organizational resilience and better protect your people, places and property.

For more information, please visit www.onsolve.com.

