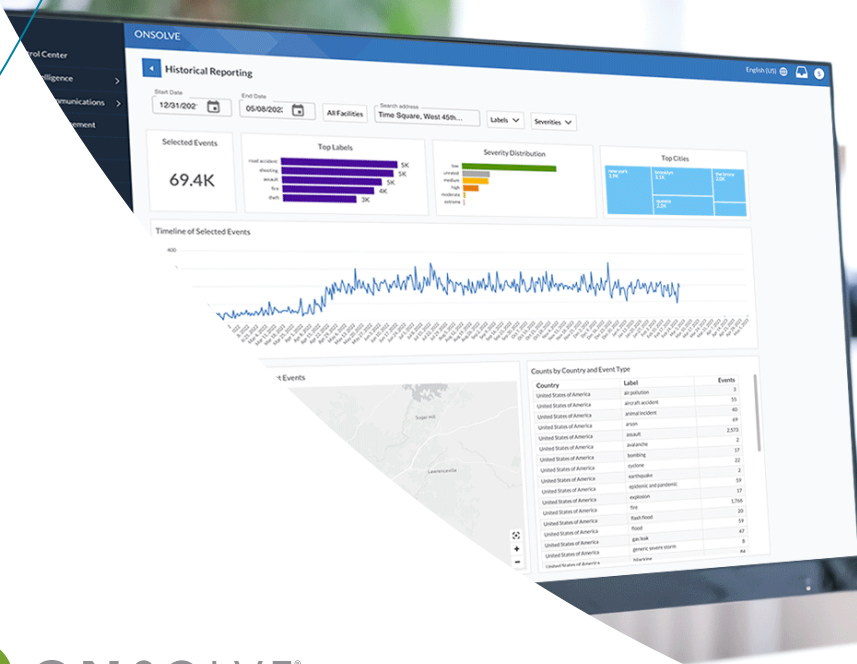




# 6 Ways Federal Agencies Can Use Historical Threat Data and Analysis

In an ever-changing and unpredictable world, ensuring the safety and security of our nation is of paramount importance for federal agencies. Critical events have the potential to impact agency operations in sectors spanning public health and safety, environmental protection, transportation, infrastructure and national security. With advancements in data collection and analytics, historical physical threat data has become a valuable tool to reveal patterns and trends around these potential disruptors.

By harnessing this data, federal agencies can gain invaluable insights to develop proactive strategies, allocate resources efficiently and implement targeted interventions to protect society against potential threats. OnSolve® Risk Insights provides this data in a comprehensive and easily navigated dashboard. Agencies can access a thorough overview of historic risk exposures in specific geographic areas including crime, weather and accidents. Armed with information on past critical events and their outcomes, more informed decisions and better outcomes are attainable.



## The Power of Historical Risk Data

By assessing historical risk, federal agencies can accelerate response and recovery to better protect and serve the nation. Agencies can identify and analyze external threats to make informed, risk-based decisions and strengthen mission resilience. They can record, track and define risks across operations and anticipate areas of impact, as well as potential severity.

**With Risk Insights, agencies can optimize crisis prevention with:**



### Geographical Analysis

Improve situational awareness and determine where past events have caused impacts.



### Historical Trend Review

Identify patterns for better forecasting of future events.



### Risk Profiles

Define the most significant operational risks impacting agency resilience.



### Data Integration

Incorporate the information into operational strategy to improve outcomes.

## Use Cases

- Assess historical physical threat intelligence across the world.
- Identify high-risk areas or vulnerable populations.
- Target areas for public safety awareness and education.
- Enhance public health preparedness.
- Conduct root cause analysis of critical events.
- Support threat and vulnerability assessments.
- Supplement operational impact assessments.
- Provide pre-purchase or pre-leasing analysis.
- Guide facility siting.
- Substantiate recommendations for budget allocation.
- Identify staff training needs.



## 6 Ways Risk Insights Can Fortify Agency Operations and Reinforce Mission Resilience

Geographical analysis of physical threat trends empowers federal agencies to enhance public safety, strengthen national security and protect communities effectively. It facilitates evidence-based decision-making and ensures resources are directed where they can have the most significant impact in safeguarding the nation.

- 1 Proactive Decision Making**

By understanding past patterns and trends, agencies can proactively develop strategies to mitigate risks and appropriately allocate resources before potential threats escalate.
- 2 Situational Awareness**

In addition to real-time intelligence, agencies need to understand the historical context of threats and risks. This awareness is crucial for effective inter-agency coordination.
- 3 Targeted Intervention**

Identifying a risk before it becomes an active critical event enables agencies to stay a step ahead. Actions can be taken in advance to address growing threats, including community awareness campaigns, educational initiatives and security enhancements.
- 4 Enhanced Emergency Response**

Understanding geographical trends of past critical events enables agencies to anticipate potential future impacts. This foresight allows for better emergency response planning and preparedness, ensuring a more rapid and effective response.



- 5 Identification of Vulnerable Populations and Areas**

Pinpointing areas with challenges such as higher rates of crime or natural disasters can help agencies tailor assistance and support to the affected populations.
- 6 Incident and Policy Evaluation**

By comparing historical data with policy outcomes, agencies can refine strategies and make data-driven adjustments. Conducting thorough investigations and root cause analysis can determine which procedures may need to be updated or replaced.

## What Makes Risk Insights Unique?



### Speed

Instantly generate reports to inform your security recommendations with historical physical threat data and statistics correlated to specific locations.



### Relevance

Deliver targeted, customized reports that summarize concerns and risk trends, categorized by date, time and region of interest, so decision-makers can view them in light of overall goals.

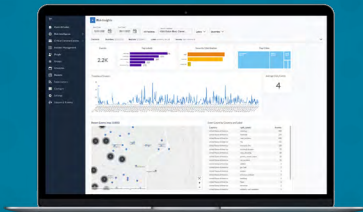


### Usability

View the information in a digestible format that makes it easy for stakeholders to quickly understand the situation and glean actionable intelligence, all from one intuitive dashboard.

## OnSolve Benefits

Federal agencies know the incidents that affect their mission, the ripple effects they cause across the nation and the resources needed to address them. But can you back it up with data to get the budget you need? Numbers are crucial to justify spending. Instead of exhausting valuable time to compile data and review research, now you can quickly generate reports and graphs in just a few clicks. Filtered data demonstrates your proof points so you can make your case. Get everything you need to keep your operations going strong while protecting the people and operations that rely on you.



Schedule a demonstration to see how Risk Insights can help your agency complete its mission with accurate and in-depth historical risk data and analysis.

[SCHEDULE A DEMO](#)

## About OnSolve

OnSolve® proactively mitigates physical threats, allowing organizations to remain agile when a crisis strikes. Using trusted expertise and reliable AI-powered risk intelligence, critical communications and incident management technology, the OnSolve Platform allows organizations to detect, anticipate and mitigate physical threats that impact their people and operations. Visit [www.onsolve.com](http://www.onsolve.com).

